

Bill of Materials

	Part	Material
1	Chamber	
2	Cover	
3	Glass	
4	Cushion	
5	Gasket	
6	U-Bolt	
7	Washer	
8	Nut	

Notes

Dimensions

B

**Steam-Trac ST-300**

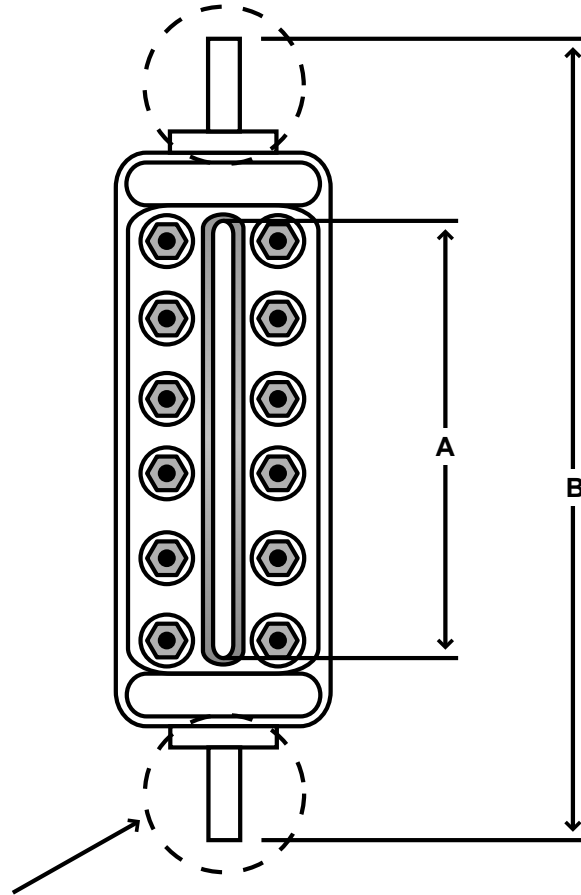


**1-Section**

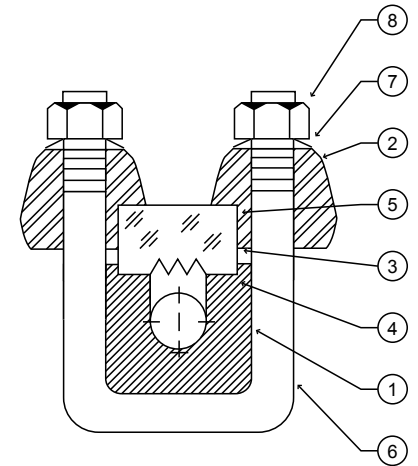


*The New Standard of Level*

Customer:		Drawing No:	
		Serial No:	
Cust. Ref:		Drawn By:	EB
Factory Ref:		Checked By:	
Date:		Certified By:	



Model	Dim "A"
<b>ST-300-41</b>	6.750
<b>ST-300-51</b>	7.875
<b>ST-300-61</b>	9.125
<b>ST-300-71</b>	10.250
<b>ST-300-81</b>	11.875
<b>ST-300-91</b>	12.625
<b>Dimensions in inches</b>	



Gage Connection Options

