

Bill of Materials

	Part	Material
1	Chamber	
2	Cover	
3	Glass	
4	Cushion	
5	Gasket	
6	U-Bolt	
7	Washer	
8	Nut	

Notes

Dimensions

C	
D	
E	

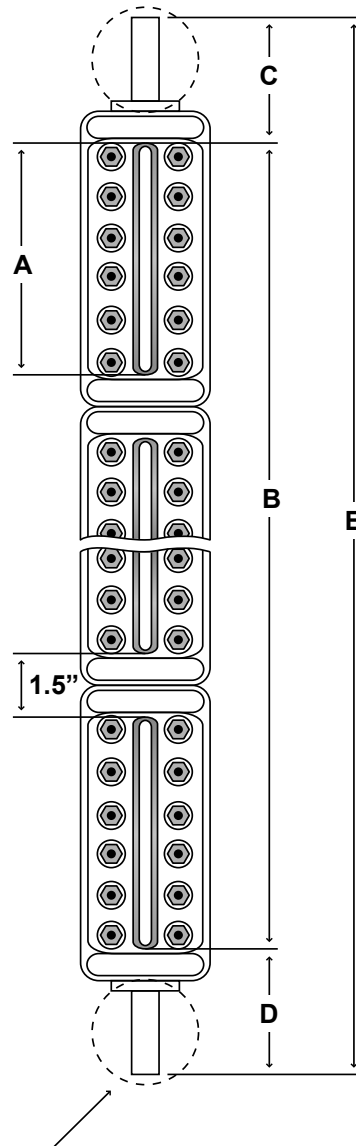
**Steam-Trac ST-300**



**Multiple-Section**

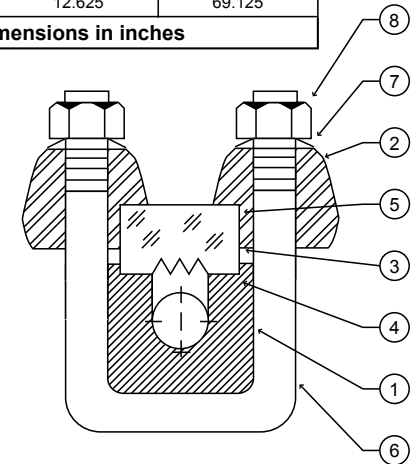
**Quest-Tec Solutions** *The New Standard of Level*

Customer:		Drawing No:	
		Serial No:	
Cust. Ref:		Drawn By:	EB
Factory Ref:		Checked By:	
Date:		Certified By:	



Model	Dim "A"	Dim "B"
ST-300-42	6.750	15.000
ST-300-52	7.875	17.250
ST-300-62	9.125	19.750
ST-300-72	10.250	22.000
ST-300-82	11.875	25.250
ST-300-92	12.625	26.750
ST-300-43	6.750	23.250
ST-300-53	7.875	26.625
ST-300-63	9.125	30.375
ST-300-73	10.250	33.750
ST-300-83	11.875	38.625
ST-300-93	12.625	40.875
ST-300-44	6.750	31.500
ST-300-54	7.875	36.000
ST-300-64	9.125	41.000
ST-300-74	10.250	45.500
ST-300-84	11.875	52.000
ST-300-94	12.625	55.000
ST-300-45	6.750	39.750
ST-300-55	7.875	45.375
ST-300-65	9.125	51.625
ST-300-75	10.250	57.750
ST-300-85	11.875	65.375
ST-300-95	12.625	69.125

Dimensions in inches



Gage Connection Options

