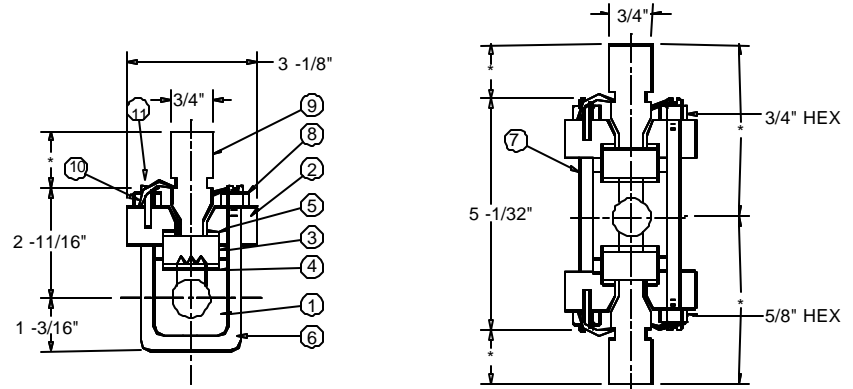
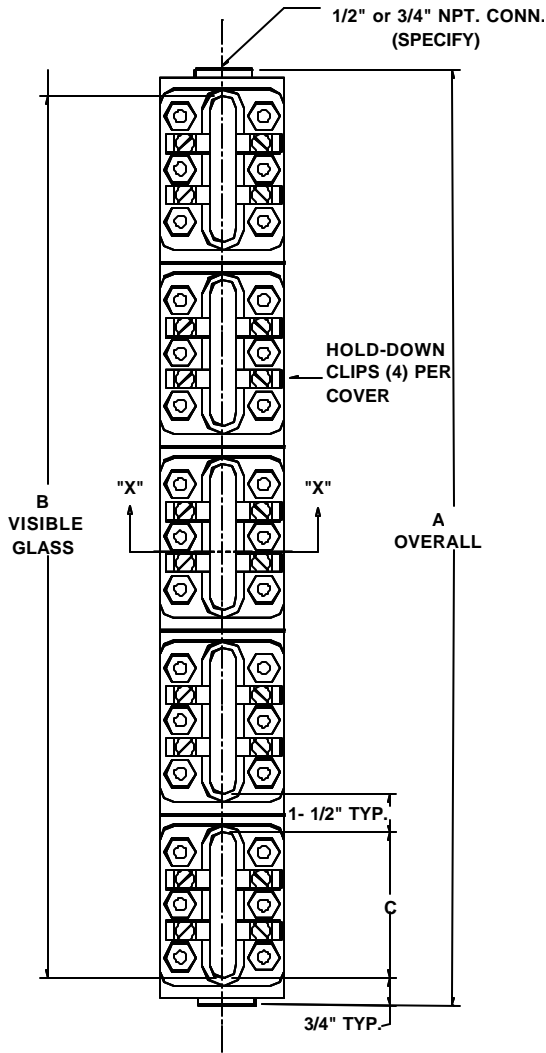


LOW PRESSURE GAGE				
	REFLEX MAX. PSIG @ TEMP.*		TRANSPARENT MAX. PSIG @ TEMP.*	
Glass Size	100°	600°	100°	600°
1	2400	1780	2000	1480
2	2325	1720	1815	1340
3	2250	1670	1630	1210
4	2175	1600	1440	1060
5	2100	1550	1250	920
6	2025	1500	1065	790
7	1950	1440	875	645
8	1875	1390	690	510
9	1800	1340	500	370



\* Depends on Extension Length

ITEM NO.	NAME	CARBON STEEL	STAINLESS STEEL WETTED
1	CHAMBER	CARBON STEEL	316L SS
2	COVER	CARBON STEEL	CARBON STEEL
3	GLASS	TEMPERED	TEMPERED
12	SHIELD	AS REQUIRED	AS REQUIRED
4	GASKET	NON-ASBESTOS	NON-ASBESTOS
5	CUSHION	NON-ASBESTOS	NON-ASBESTOS
6	U-BOLT	ASTM A193 B7	ASTM 193 B7
7	BOLT	ASTM A193 B7	ASTM 193 B7
8	NUT	ASTM A194 2H	ASTM A194 2H
9	EXTENSION	PLASTIC	PLASTIC
10	CLIP	303 S.S	303 S.S.
11	SCREW	303 S.S	303 S.S.

SIZE NO.	NUMBER OF SECTIONS					NUMBER OF SECTIONS					DIM "C" IN INCHES
	DIMENSION "A" IN INCHES					DIMENSION "B" IN INCHES					
	1	2	3	4	5	1	2	3	4	5	
1	5 1/4					3 3/4					3 3/4
2	6 1/4					4 3/4					4 3/4
3	7 1/4	14 1/2				5 3/4	13				5 3/4
4	8 1/4	16 1/2				6 3/4	15				6 3/4
5	9 3/8	18 3/4				7 7/8	17 1/4				7 7/8
6	10 5/8	21 1/4	31 7/8			9 1/8	19 3/4	30 3/8			9 1/8
7	11 3/4	23 1/2	35 1/4	47	58 3/4	10 1/4	22	33 3/4	45 1/2	57 1/4	10 1/4
8	13 3/8	26 3/4	40 1/8	53 1/2	66 7/8	11 7/8	25 1/4	38 5/8	52	65 3/8	11 7/8
9	14 1/8	28 1/4	42 3/8	56 1/2	70 5/8	12 5/8	26 3/4	40 7/8	55	69 1/8	12 5/8

Customer \_\_\_\_\_  
 Cust. P. O. #: \_\_\_\_\_  
 Factory #: \_\_\_\_\_  
 Rep P.O. #: \_\_\_\_\_  
 Assembled \_\_\_\_\_ "Centers"  
 Tag #'s: \_\_\_\_\_

**FROST PREVENTION EXTENSIONS 120-33**  
**SERIES FP**  
**LOW PRESSURE**  
**1/2" OR 3/4" NPT CONN.**



P.O. Box 2127 • Stafford, Texas 77497-2127  
 (281) 240-0440 • Fax: (281) 240-2440

Scale: \_\_\_\_\_ **Date:** \_\_\_\_\_  
 Drawing #: \_\_\_\_\_  
 Revision #: \_\_\_\_\_  
 Drawn By: **DMC**  
 Ck'd By: \_\_\_\_\_  
 Certified By: \_\_\_\_\_  
 Model #: \_\_\_\_\_