

SPECIALTY GAGES QUEST-TEC GLASS-TRAC



EXAMPLE: 71RL-CH 2-5/8"
NON-FROST EXTENSIONS

FROST-PREVENTION EXTENSIONS

Glass-Trac plastic extensions for flat gage glasses prevent frost from forming in the liquid level view slot in low temperature services. Reflex and Transparent Gages in all pressure ratings can be fitted with plastic extensions.

Projecting from the view slot, the clear plastic extensions keeps the liquid level indication clearly visible. Stocked extensions are 1 5/8" and 3 5/8" in length. If the gage is thickly insulated, longer extensions are available. The extension is held in place by stainless steel clamps fastened to the gage cover. For extra low temperature services, Glass-Trac gages can be made of special metals.

Recommended length for Frost Preventive Extensions: 1 5/8" extension is standard from 80°F ambient to 0°F temperature. Add 1" extension length for each 100° F below 0° F.

When ordering, specify length and add FP to gage size number.

Process Temperature		Extension Length	
°F	°C	mm	inches
0	-18	92	3 5/8"
-100	-73	117	4 5/8"
-200	-129	143	5 5/8"

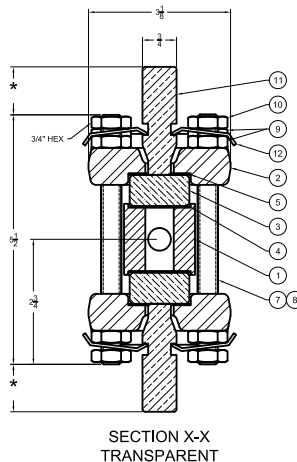
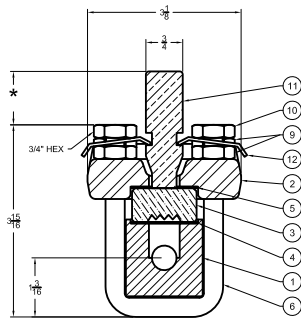
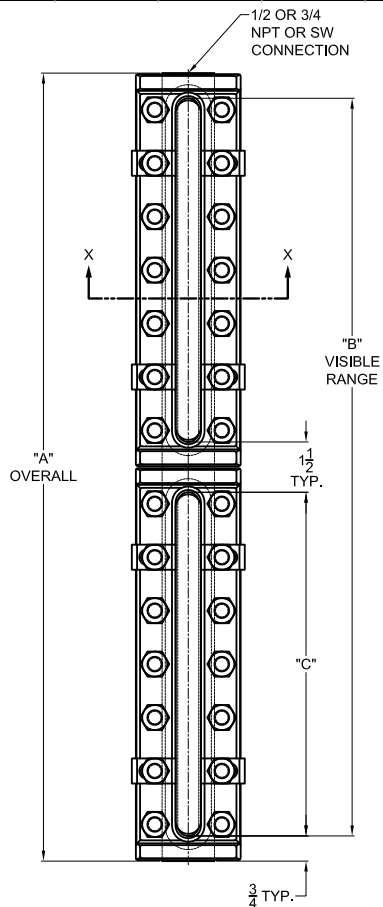
Note: Frost-prevention extension is sold separately and requires installation in field with low temperature resistant caulking. Caulk inside vision slot and press fit acrylic shield into slot.

For process temperatures below -18°C (0°F), it is likely that frost will build up around a gage due to contact with the ambient temperature. When this is likely, a non-frost extension should be specified. Quest-Tec Solutions recommends using the following table to determine extension length. For process temperatures below -18°C (0°F), it is likely that frost will build up around a gage due to contact with the ambient temperature. When this is likely, a non-frost extension should be specified. Quest-Tec Solutions recommends using the table to the left to determine extension length.

FROST PREVENTION EXTENSIONS

PRESSURE RATINGS & DIMENSIONS

SIZE NO.		DIMENSIONS (IN INCHES)			LOW PRESSURE				MID-PRESSURE			
GLASS SIZE	NO. SECT.	A	B	C	REFLEX MAX. PSIG @ TEMP.*		TRANSPARENT MAX. PSIG @ TEMP.*		REFLEX MAX. PSIG @ TEMP.*		TRANSPARENT MAX. PSIG @ TEMP.*	
					100° F	700° F	100° F	700° F	100° F	700° F	100° F	700° F
1	1	5 1/4	3 3/4	3 3/4	2400	1520	2000	1260	3000	1890	2500	1580
2	1	6 1/4	4 3/4	4 3/4	2325	1470	1815	1150	2910	1840	2315	1470
3	1	7 1/4	5 3/4	5 3/4	2250	1420	1630	1050	2820	1780	2130	1340
4	1	8 1/4	6 3/4	6 3/4	2175	1370	1440	900	2725	1740	1940	1230
5	1	9 3/8	7 7/8	7 7/8	2100	1320	1250	790	2630	1660	1750	1100
6	1	10 5/8	9 1/8	9 1/8	2025	1280	1065	680	2535	1600	1565	990
7	1	11 3/4	10 1/4	10 1/4	1950	1230	875	550	2440	1540	1375	870
8	1	13 3/8	11 7/8	11 7/8	1875	1180	690	440	2345	1480	1190	750
9	1	14 1/8	12 5/8	12 5/8	1800	1140	500	320	2250	1420	1000	630
3	2	14 1/2	13	5 3/4	2250	1420	1630	1050	2820	1780	2130	1340
4	2	16 1/2	15	6 3/4	2175	1370	1440	900	2725	1740	1940	1230
5	2	18 3/4	17 1/4	7 7/8	2100	1320	1250	790	2630	1660	1750	1100
6	2	21 1/4	19 3/4	9 1/8	2025	1280	1065	680	2535	1600	1565	990
7	2	23 1/2	22	10 1/4	1950	1230	875	550	2440	1540	1375	870
8	2	26 3/4	25 1/4	11 7/8	1875	1180	690	440	2345	1480	1190	750
9	2	28 1/4	26 3/4	12 5/8	1800	1140	500	320	2250	1420	1000	630
6	3	31 7/8	30 3/8	9 1/8	2025	1280	1065	680	2535	1600	1565	990
7	3	35 1/4	33 3/4	10 1/4	1950	1230	875	550	2440	1540	1375	870
8	3	40 1/8	38 5/8	11 7/8	1875	1180	690	440	2345	1480	1190	750
9	3	42 3/8	40 7/8	12 5/8	1800	1140	500	320	2250	1420	1000	630
7	4	47	45 1/2	10 1/4	1950	1230	875	550	2440	1540	1375	870
8	4	53 1/2	52	11 7/8	1875	1180	690	440	2345	1480	1190	750
9	4	56 1/2	55	12 5/8	1800	1140	500	320	2250	1420	1000	630
7	5	58 3/4	57 1/4	10 1/4	1950	1230	875	550	2440	1540	1375	870
8	5	66 7/8	65 3/8	11 7/8	1875	1180	690	440	2345	1480	1190	750
9	5	70 5/8	69 1/8	12 5/8	1800	1140	500	320	2250	1420	1000	630



PARTS		
ITEM#	NAME	STANDARD
1	CHAMBER	CARBON STEEL
2	COVER	CARBON STEEL
3	GLASS	TEMPERED BOROSILICATE
4	GASKET	GARLOCK IFG-5500
5	CUSHION	GARLOCK IFG-5500
6	U-BOLT	SA-193 B7
7	BOLT	SA-193 B7
8	STUD	SA-193 B7
9	NUT	SA-194 2H
10	JAM NUT	316 SS
11	EXTENSION	LUCITE
12	CLIP	316 SS