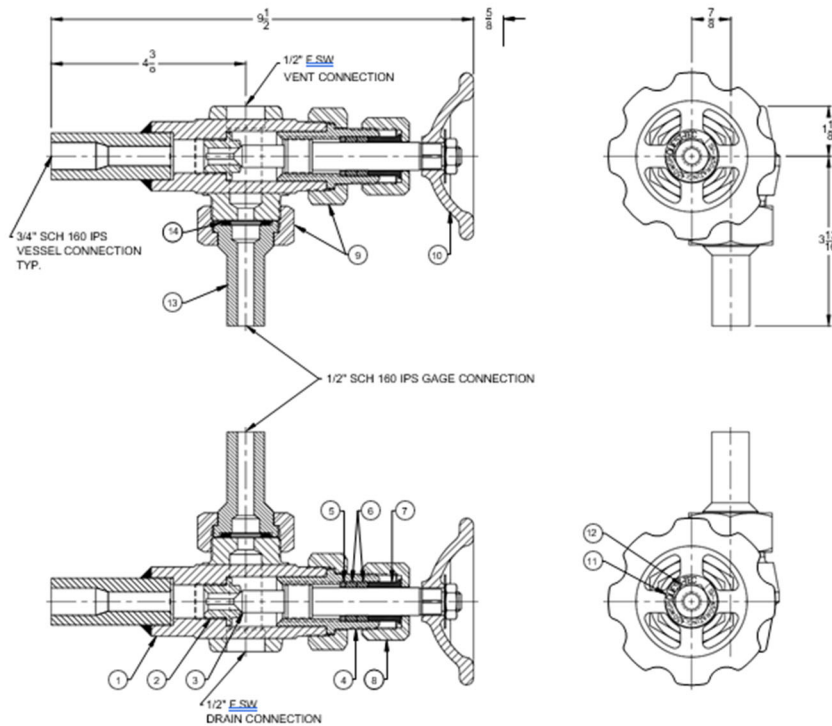


### Specification

Pressure Rating:	450 PSI WSP (450 PSI @ 460 F saturated steam)	Standard Material	
Body Type:	Angle, Forged Steel Body	Body:	SA-105 CS
Body Pattern:	Offset	Stem Packing:	Graphite
Bonnet Type:	Union	Trim:	13CR
Seat Type:	Replaceable, Removeable	Stuffing Box Packing:	Gaphite
Maximum Temp:	750 F	Other non-standard material available, consult factory	

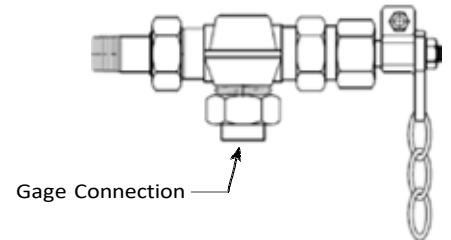
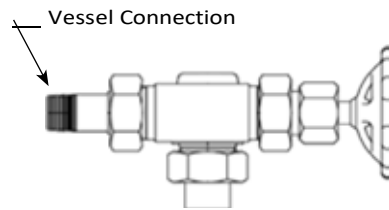
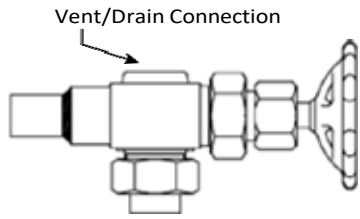
The SV-450 valve is specifically designed for use with a boiler water level gage glass. This valve is supplied as a valve set including one top valve, and one bottom valve. Each valve has 3 connection ports available in a wide range of sizes and types, (vessel x gage x vent/drain). The angled flow path facilitates compact installation of the gage glass, bringing the assembly connection point to the side. The offset body pattern allows a direct path around the stem to clean through the vent/drain ports. The standard vent/drain ports are 1/2" F.NPT, 3/4" F.NPT and SW are also available. As a Questtec standard supplied with plain closing hand wheel with 2½ turns. Ball checks are omitted in standard form, and available as an option. Ball checks are neither required nor prohibited by ASME Section I.



BILL OF MATERIALS		
ITEM#	DESCRIPTION	MATERIAL
1	VALVE BODY	SA-105, CS
2	VALVE SEAT	13 Cr
3	VALVE STEM	13 Cr
4	BONNET	CARBON STEEL
5	PACKING WASHER	17-4 PH SS
6	PACKING	GRAFOIL
7	PACKING FOLLOWER	316 SS
8	PACKING NUT	CARBON STEEL
9	UNION NUT	CARBON STEEL
10	HANDWHEEL	IRON
11	TAG	304 SS
12	HANDWHEEL NUT	18-8 SS
13	GASKET UNION MALE CONNECTOR	SA-105, CS
14	GASKET	304-GRAPHITE / CS

### Model Code

#### EXAMPLE MODELS



MODEL: SV-450-V06I-G04U-D04T  
VESSEL: 3/4" IPS PIPE STUB/SOLID SHANK  
GAGE: 1/2" UNIFLEX GASKET UNION SW  
VENT/DRAIN: 1/2" F.NPT

MODEL: SV-450-V06M-G06J-D04T  
VESSEL: 3/4" M.NPT UNION  
GAGE: 3/4" F.NPT UNION  
VENT/DRAIN: 1/2" F.NPT

MODEL: SV-450-V06M-G06N-D06T-QL  
VESSEL: 3/4" M.NPT UNION  
GAGE: 3/4" STUFFING BOX  
VENT/DRAIN: 3/4" F.NPT  
QUICK CLOSE LEVER  
CHAIN DROP: 6 FT



## SV-450-V06I-G04US-D04S -

04	1/2"
06	3/4" (STD)
08	1"
10	1 1/4"
12	1 1/2"
16	2"
20	2 1/2"
24	3"

04	1/2" (STD)
06	3/4"
08	1"
10	1 1/4"
12	1 1/2"
16	2"
20	2 1/2"
24	3"

04	1/2" (STD)
06	3/4"
08	1"
10	1 1/4"
12	1 1/2"
16	2"
20	2 1/2"
24	3"

	PLAIN CLOSING HAND WHEEL, 2 1/2 TURN (STD)
QL	QUICK CLOSING WITH LEVERS (SEE NOTE 1)
Q	QUICK CLOSING (HAND WHEEL)
BC	BALL CHECKS (SEE NOTE 2)
W	CHAIN WHEEL (SEE NOTE 3)
X	SPECIAL PER REQUEST
LL	LIVE LOAD PACKING

M	MALE NPT x UNION
T	FEMALE NPT x UNION
S	SOCKET WELD x SOLID SHANK
H	SOCKET WELD x UNION
I	PIPE STUB x SOLID SHANK (STD)
W	PIPE STUB x UNION
F	FLANGE x SOLID SHANK (DESCRIBE FLANGE BELOW: CLASS/FACE/WELD TYPE)
C	FLANGE x UNION (DESCRIBE FLANGE BELOW: CLASS/FACE/WELD TYPE)
X	SPECIAL PER REQUEST

T	F.NPT
N	STUFFING BOX
US	UNIFLEX GASKET UNION x SW
U	UNIFLEX GASKET UNION x F.NPT (STD)
S	SOCKET WELD
J	F.NPT UNION
F	FLANGE x SOLID SHANK (DESCRIBE FLANGE BELOW: CLASS/FACE/WELD TYPE)
X	SPECIAL PER REQUEST

T	F.NPT
S	SOCKET WELD (STD)
F	FLANGE x SOLID SHANK (DESCRIBE CLASS/FACE/WELD TYPE)
X	SPECIAL PER REQUEST

#### FLANGE SPECIFICATION

FLANGE CLASS	FLANGE FACE	FLANGE WELD TYPE
150	RF	SO
300	RTJ	SW
600		WN

SEE NOTE 4, 5, 6

#### NOTE:

- When specifying quick closing levers, describe chain drop length, or indicate no chain.
- When selecting ball check option, ASME Section I requirements (A-18) are followed. Contact factory for detailed information.
- When specifying chain wheel, describe chain drop length, or indicate no chain.
- When specifying flanged vessel connection, solid shank (non-union) F model code is typically used.
- Typical flange class used with the 450 PSI valve model are 150 and 300, other flange class and valve models available.
- Other "oddball" flange face types available such as tonque/groove or male/female, consult factory.
- (STD), Questtec Standard



ASME "S" & "R"  
Stamp holder



ISO 9001: 2015  
QMS, Cert.#0736

www.qtslevel.com



ASME Sec. VIII  
Div I BPVC  
Certified  
Manufacturing

CNC Precision  
Machining for all  
components