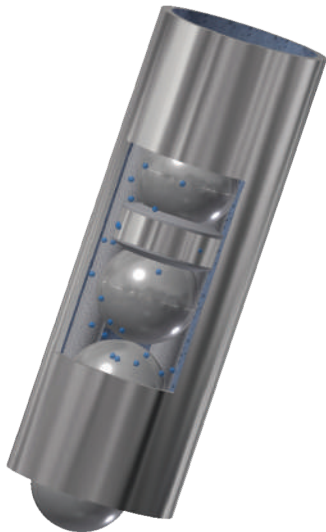


## FLASHING & BOILING SOLUTIONS

Boiling fluids and flashing vapors can be obstacles experienced at the plant level. Due to the fitted design of a magnetic gage, vapors caused by flashing have no escape due to the close fit of the chamber and float. Vapor will accumulate under the float causing it to launch to the top of the chamber and be damaged. Conversely, with boiling fluids the float can sink, causing false readings.

To improve these concerns, Quest-Tec Solutions offers a larger chamber design aligned with internal guide rods. Our solution allows for vapors to pass through with ease during flashing while keeping the float adjusted closely to the indicator.



### FEATURES

- Oversized Chamber
- Guide Rods
- ASME B31.0, B31.3 Design Standard Used
- 0.36-1.80 Specific Gravity Range
- Length Up to 240"

### TYPICAL APPLICATIONS

- Boiling Fluids
- Flashing Vapors
- Dirty Service
- Highly Vicious Fluid
- Refrigerants

### TECHNICAL DATA

- 3" Sch. 40 Chamber Standard
- 2.25" Titanium Ball Float
- 360° Ring Magnet
- -300°F - 1000°F Temperature Range
- Full VAC -2800 PSI Pressure Rating