

## OPTIONAL EQUIPMENT

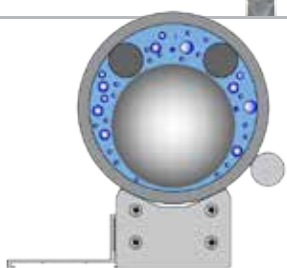
These items are listed on the Specification Guide for items to add to our MLI.

### HIGH-TEMPERATURE INSULATION



**Questtec Solutions** specializes in custom fiberglass insulation blankets for MLIs of all shapes and sizes. They are constructed with high-quality materials capable of constant contact with temperatures up to 1,000° F [538° C]. This insulation is available as personal protection or with heat tracing options for freeze protection or process temperature maintenance.

### OVERSIZED CHAMBERS (BOILING FLUIDS, FLASHING VAPORS & DIRTY SERVICE)



Used to uniformly heat or cool process fluid. Over sized chamber allows vapors to pass floats when a fluid is close to vapor pressure and can be used in fluids with small suspended particles. Also, used in conjunction with Teflon S coating for non-stick. [Boiling Liquids, Flashing Vapors and Dirty Service]

Applications:

- Light Hydrocarbons
- Liquid Nitrogen
- Propane
- Anhydrous Ammonia
- Methane (or any pressure-liquified gas)
- Carbon Dioxide

### HERMETICALLY-SEALED FLAG INDICATOR



**No gaskets: can't leak or fog**

Designed to meet needs of chemical wash down, severe environments and offshore industry. Flag indicators are purged with inert gas and permanently sealed in:

- Glass tubing with 100% fused glass end seals to 800° F [427° C] process temperatures

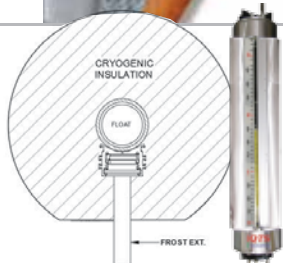
### HEAT TRACING: ELECTRIC & STEAM



For applications where process freeze protection or temperature maintenance is required, heat tracing will allow the MLI to operate uninterrupted throughout harsh, cold conditions.

Electric Heat Tracing is available in self-regulating, constant wattage, and mineral insulated varieties. Contact the factory for more information.

### CRYOGENIC INSULATING & FROST EXTENSION



To facilitate operation where the product is kept cold via chillers, refrigerants, and condensers, cryogenic insulation is provided. By insulating the MLI with a specialized cryogenic jacket, process temperatures can be maintained in the liquid state down to -320° F [-195° C].

A frost extension option is available to prevent ice from collecting on the visual indicator, thereby decreasing the visibility. The extension is constructed of durable acrylic plastic and is provided standard with all cryogenic insulation

### MAGNETIC PARTICLE TRAP



Magnetic Particle Traps provide protection for MLIs. The particles are composed mostly of ferrite, often from carbon steel piping. The trap keeps magnetic particles out of float chamber. The Trap fits in line with the process connection. The trap collects the particles which can be cleaned periodically to ensure continued operation of the magnetic level indicator.