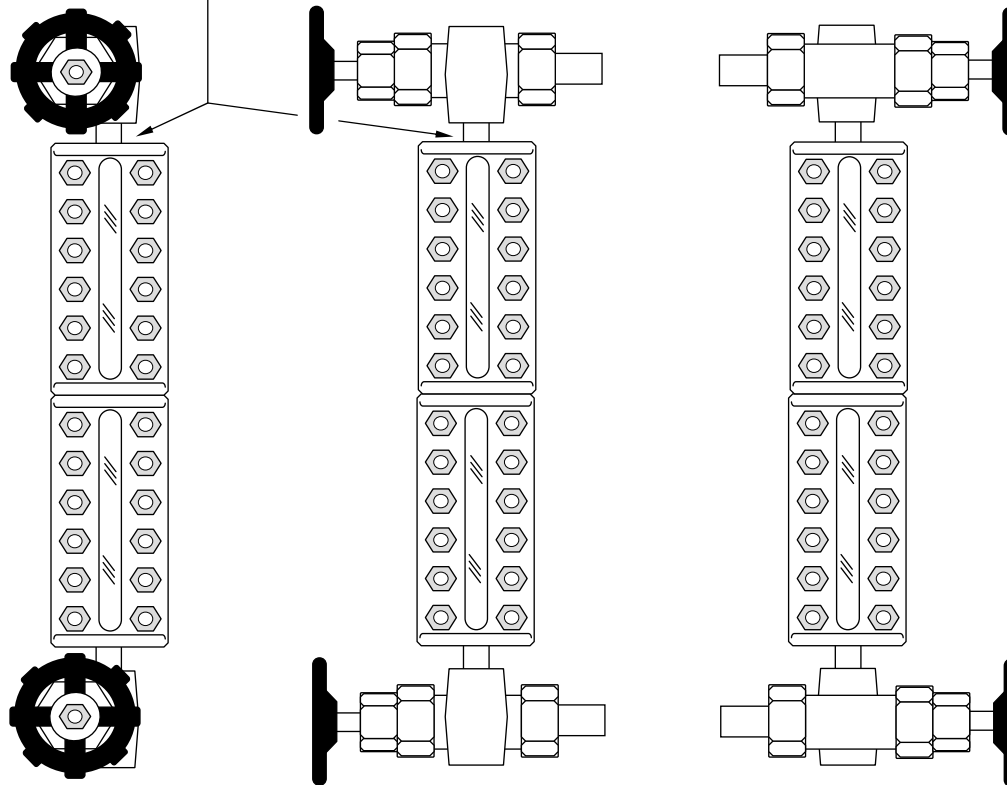


TOP/BOTTOM
END CONNECTED GAGE
(GAGE CHAMBER TO
VALVE CONNECTION)



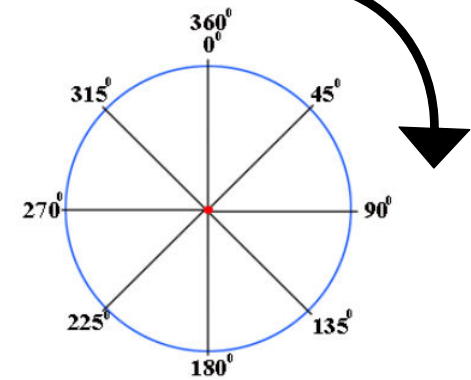
VIEWING ANGLE: 180 DEG.

VIEWING ANGLE: 90 DEG.

VIEWING ANGLE: 270 DEG.

"STANDARD"

PLAN VIEW
VIEWING ANGLE SPECIFIED CLOCKWISE
FROM VESSEL CONNECTION AT 0 DEGREES



TO SPECIFY THE ASSEMBLY ORIENTATION TWO REFERENCE POINTS MUST BE IDENTIFIED, THE VESSEL CONNECTION AND VIEWING ANGLE. THE VESSEL CONNECTION IS SET AT 0 DEG. THE VIEWING ANGLE IS SET AT ANY DESIRED POSITION WHERE CLEARANCE PERMITS. THE STANDARD VIEWING ANGLE IS 180 DEG FOR ALL GLASS-TRAC GAGE ASSEMBLIES, UNLESS NOTED OTHERWISE. IF A NON-STANDARD VIEWING ANGLE IS REQUIRED, SPECIFY THE VIEWING ANGLE.

NOTE:

- 1) SIDE CONNECTED (CLOSE HOOK-UP "CH") GAGE ASSEMBLIES ARE FIXED AT 180 DEG.
- 2) BACK CONNECTED GAGE ASSEMBLIES ARE FIXED AT EITHER 90 OR 270 DEG.

REV	DATE	DESCRIPTION	DRN	APPD
0	8/15/2012	VIEWING ANGLE (GLASS-TRAC)	JAB	MRB

QUEST-TEC SOLUTIONS, SPECIFYING VIEWING ANGLES	
(NOT TO SCALE)	QTS Quest-Tec Solutions <small>The New Standard of Level</small>
DWG NO.	D081512-01-R.0
1 OF 1	