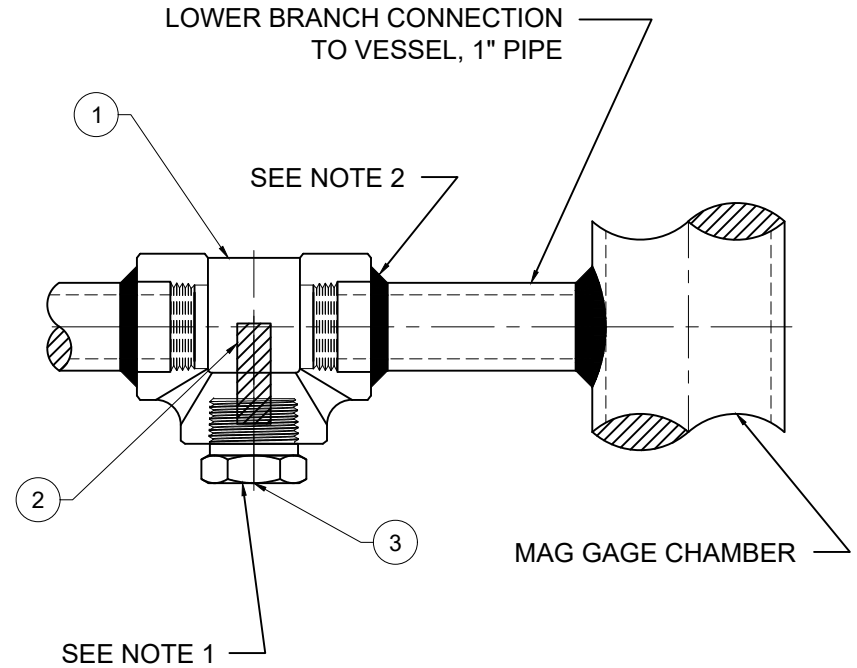


PLUG ASSEMBLY



INSTALLED MAGNETIC PARTICLE TRAP

BILL OF MATERIALS

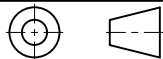
ITEM	DESCRIPTION	P/N	QTY
1	1" SW x 1" SW x 1" NPT 3000# TEE (316SS)	1-7-045708-02	1
2	CYLINDER MAGNET Ø1/2 x 1 1/2" LG. (N42)	1-6-45708-01	1
3	1" M.NPT HEX HEAD PIPE PLUG W/ Ø9/16 HOLE FOR MAGNET (316SS)	1-7-045708-03	1
4	J-B WELD TWIN TUBE - 2 OZ. (SKU: 8265S)	N/A	1
5			
6			
7			

NOTES

WORK ORDER #

SI METRIC

THIRD ANGLE PROJECTION



ERN: 0584

REV DATE DESCRIPTION DRN APPD

UNLESS OTHERWISE NOTED ALL DIMENSIONS IN INCHES

THIS DRAWING IN DESIGN AND DETAIL IS OUR PROPERTY AND MUST NOT BE USED EXCEPT IN CONNECTION WITH OUR WORK. IT SHALL NOT BE REPRODUCED AND SHALL BE RETURNED TO US ON DEMAND. ALL RIGHTS ARE RESERVED.

STANDARD MANUFACTURING LIMITS UNLESS OTHERWISE SPECIFIED

X.XX ±.015
 X.XXX ±.005
 ANGULAR ±0° 30'
 FINISH 200 RA MAX
 FRACTIONAL ±1/64
 CONCENTRICITY WITHIN .005

BREAK ALL SHARP CORNERS TO .003-.015 RADIUS AND REMOVE ALL BURRS



13960 SOUTH WAYSIDE DR.
 HOUSTON, TEXAS 77048
 OFFICE (281)240-0440
 FAX (281)240-2440
 WWW.QTSLevel.com

TITLE MAGNETIC PARTICLE TRAP ASSEMBLY FOR 1" PIPE, 316SS

DRN	DW	DATE	9/28/23	SIZE	DRAWING #	REV
CHKD	JR	DATE	10/2/23	A	Q-1403	0
APPD	JR	DATE	10/2/23	SCALE	N.T.S.	SHEET 1 OF 1